

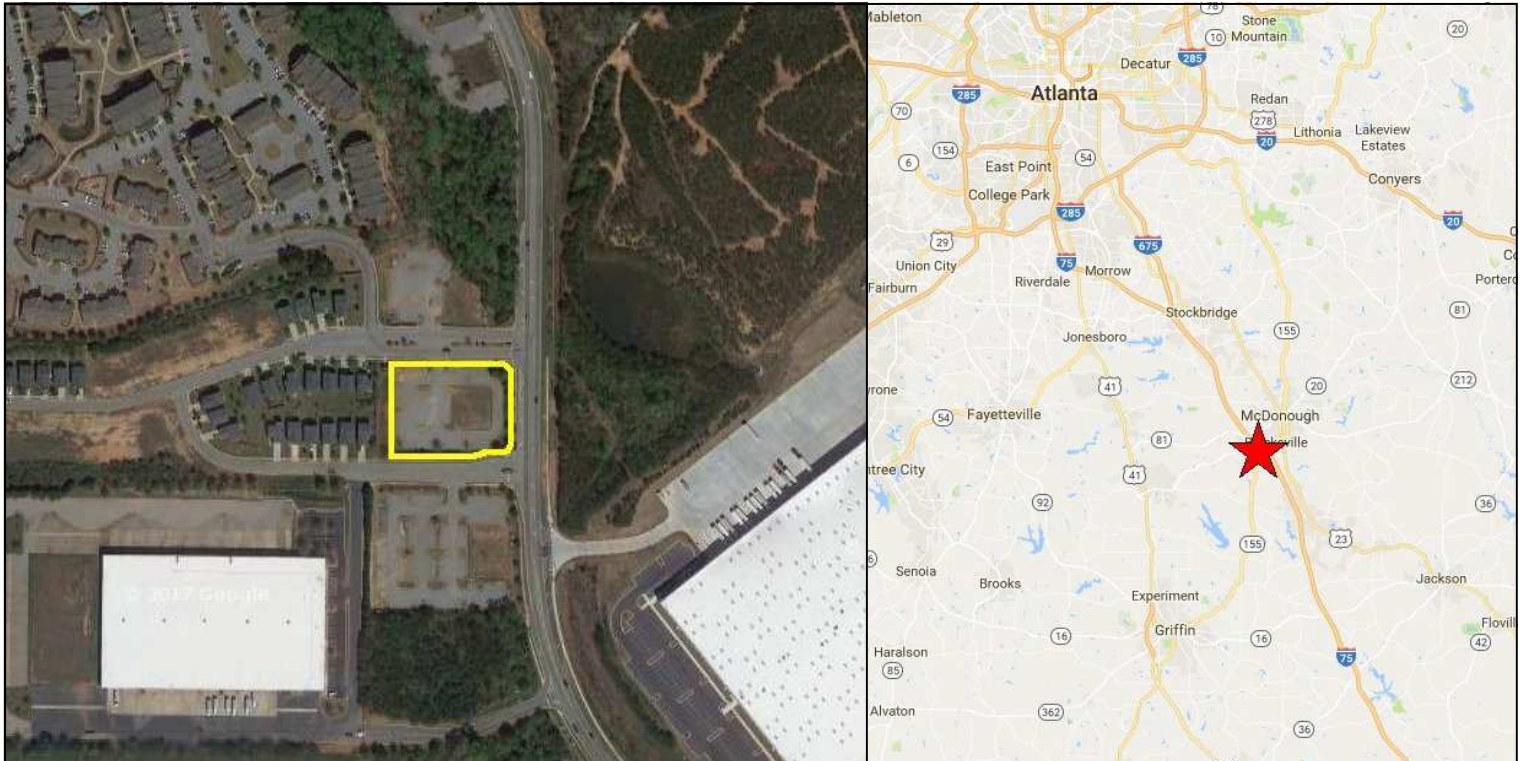
1.39+/- Acres Industrial Parkway

FOR SALE



Metro Brokers

McDonough, GA 30253



PROPERTY OVERVIEW

1.39+/- Acre Commercial lot in a great location! Zoned C-2 Commercial Limited. This great location is available and can accommodate multi-story buildings to house professional offices, retail stores and/or restaurants. Conveniently located adjacent to a large apartment complex along a highly traveled road resulting in tons of exposure and potential patrons. Site is fully developed and pad ready with curb, gutter, parking and all infrastructure already in place.

FOR MORE DETAILS CONTACT:

Butch Springer, CCIM | butch.springer@ccim.net

Coldwell Banker Commercial Metro Brokers

DETAILS

AREA: 1.39+/- Acres

PRICE: \$259,900

FEATURES:

- Situated in an ideal high traffic location alongside I-75 in McDonough
- Located moments from two I-75 interchanges
- Approximately 24 Miles to Hartsfield Jackson Airport
- Close Proximity to Many Restaurants and Other Businesses

Direct 770.527.1818 **Main** 678.320.4800 1401 Highway 20 W
Fax 678.610.6170 McDonough, GA 30253

CBCWorldwide.com

Coldwell Banker Commercial and the Coldwell Banker Commercial Logo are registered service marks licensed to Coldwell Banker Real Estate LLC. Each Office is Independently Owned and Operated.
This document is provided subject to errors, omissions & changes in the information & is subject to modification or withdrawal.